

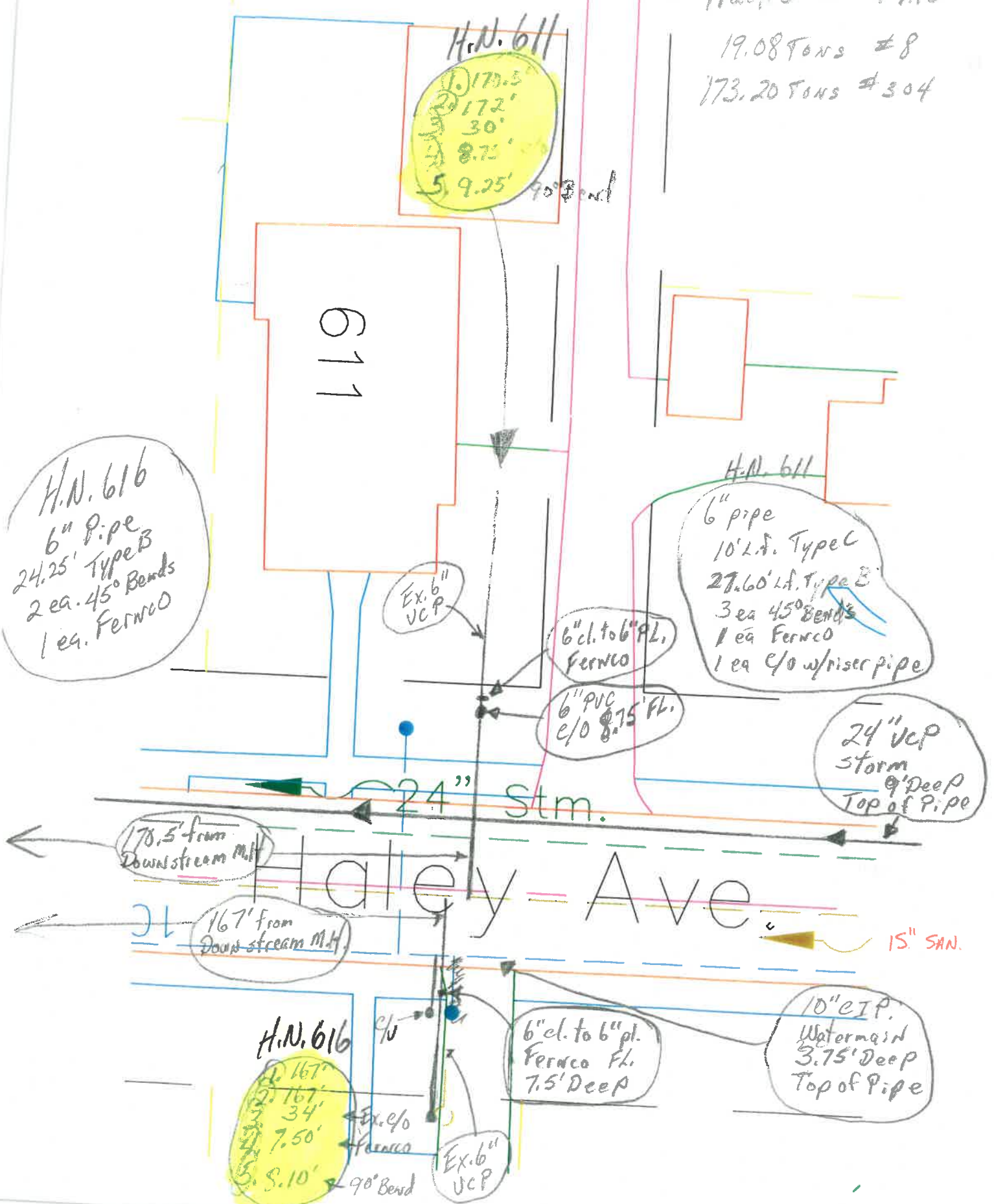
7:30 a.m. to 4:00 p.m.

3-27-15

Total  
3 Trucks 23 3/4 hrs

19.08 Tons #8

173.20 Tons #304



H.N. 611  
 1. 170.5'  
 2. 172'  
 3. 30'  
 4. 8.75'  
 5. 9.25'

611

H.N. 616  
 6" Pipe  
 24.25' Type B  
 2 ea. 45° Bends  
 1 ea. Ferruco

H.N. 611  
 6" pipe  
 10' L.A. Type C  
 27.60' L.A. Type B  
 3 ea 45° Bends  
 1 ea Ferruco  
 1 ea 4" w/riser pipe

Ex. 6" VCP

6" cl. to 6" PL, Ferruco

6" PVC e/o 8.75' Fl.

24" VCP storm  
 9' Deep  
 Top of Pipe

178.5' from Downstream M.H.

167' from Downstream M.H.

24" Stm.

Haley Ave

15" SAN.

H.N. 616  
 1. 167'  
 2. 167'  
 3. 34'  
 4. 7.50'  
 5. S. 10'

6" cl. to 6" pl. Ferruco Fl. 7.5' Deep

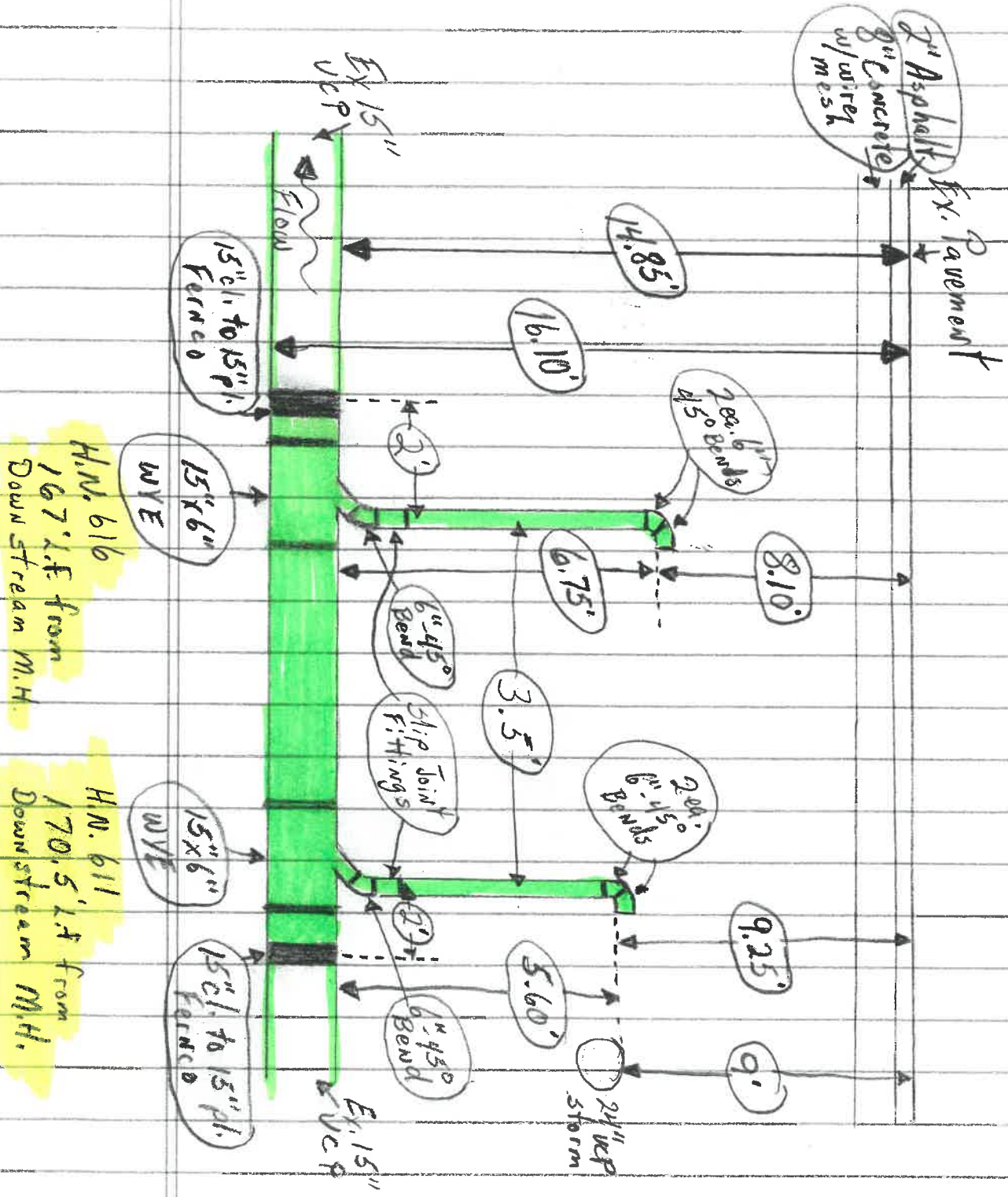
10" eIP. Watermain  
 3.75' Deep  
 Top of Pipe

Ex. 6" VCP

Ex. e/o Ferruco

90° Bend





H.N. 616  
167' L.F. from  
Downstream M.H.

H.N. 611  
170.5' L.F. from  
Downstream M.H.



## Sanitary Service Replacements

3-27-15 H.N. 611 and H.N. 616 Haley ST.

7:30 a.m. to 4:00 p.m.

320 B Cat Excavator w/operator 8½ hrs.

Loader w/operator 8½ hrs.

Laborer 8½ hrs.

Foreman 8½ hrs.

3 Each Trucks Total hrs. 23¾ hrs.

(Materials Used)

19.08 Tons # 8 stone

173.20 Tons # 304 Big Berm

37.60' L.f. 6" SDR 35 pipe 7.5' L.f. 15" SDR 35 pipe

3 each 6"-45° Bends

2 each 15" cl. to 15" pl. Fernco's

1 each Fernco

2 each 15" x 6" WYE's

1 each 6" c/o w/riser pipe 8.25' L.f.

3-28-15

7:30 a.m. to 12:00 a.m.

320 B Cat Excavator w/operator 4½ hrs.

Loader w/operator 4½ hrs.

Laborer 4½ hrs.

Foreman 4½ hrs.

1 Dump Truck 4½ hrs.

(Materials Used)

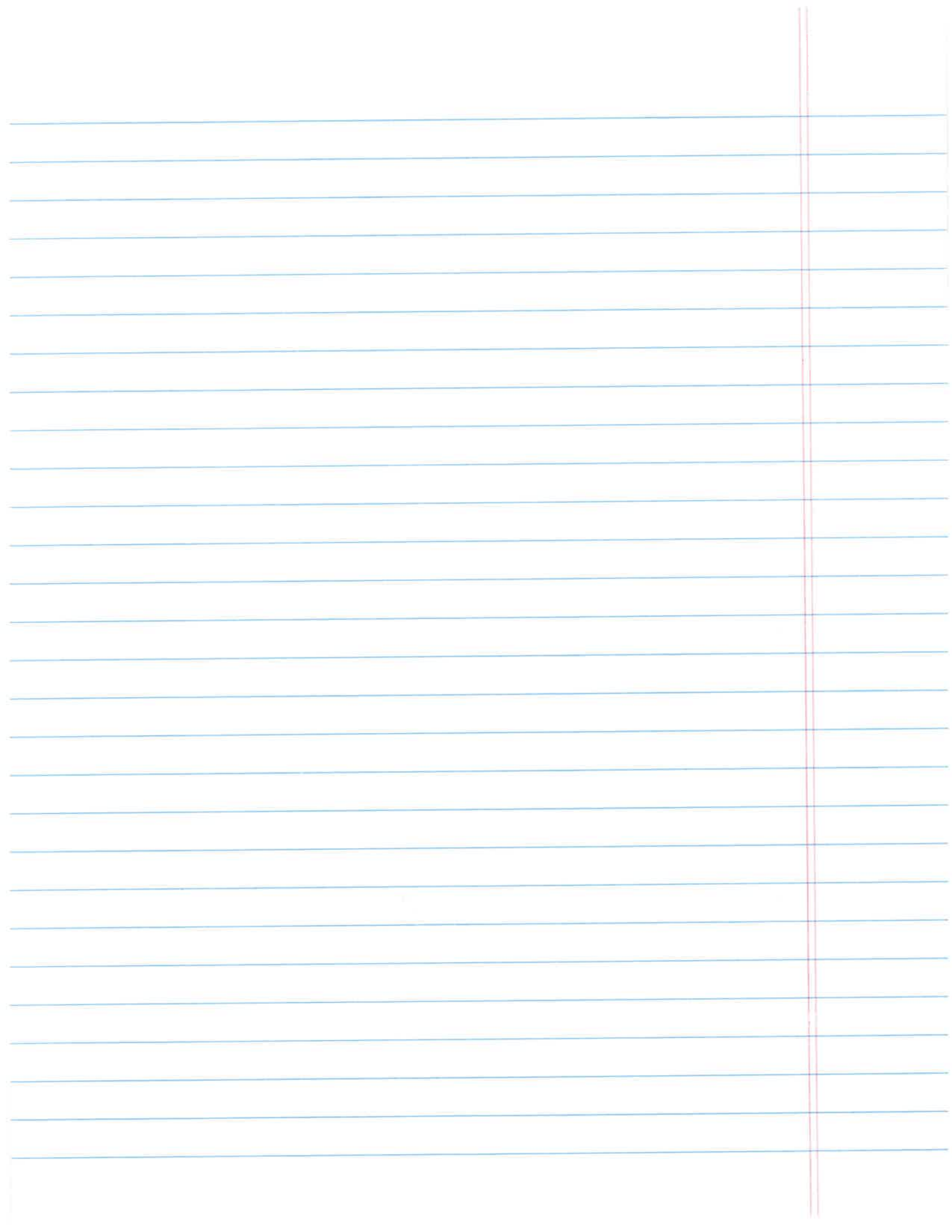
14.34 Tons # 304 Big Berm

24.25' L.f. 6" SDR 35 pipe

2 each 6"-45° Bends

1 each Fernco





ENGINEERING DEPARTMENT  
INSPECTION REPORT

PROJECT: South Side Interceptor I/I Reduction

REPORT NO.: 43

DATE: Wednesday April 1, 2015

CONTRACTOR: Vernon Nagel, Inc.

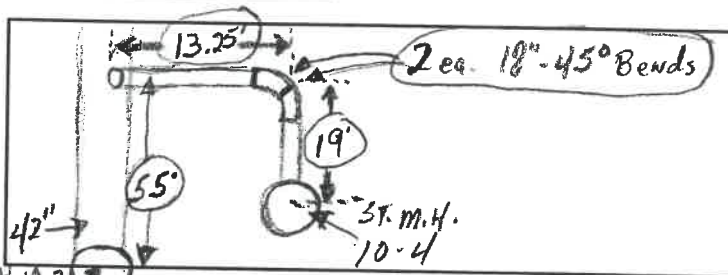
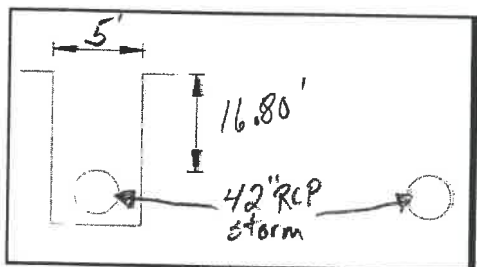
L.T.C.P. PROJ. NO. \_\_\_\_\_

INSPECTOR: Rex Moll

LABORERS	1	PAVER		SUB. CONT. FOREMAN	
BACKHOE		GRADER		SUB. CONT. LABORERS	
LOADER	1	CRANE		NUCLEAR DEN. TESTING	
DOZER		PUMP		CONCRETE TESTING	
TRUCKS		SCRAPER			
ROLLER		PVMT. SAW			
FOREMAN	1	FOREMAN			
EXCAVATOR	1				

WEATHER  
AVG. TEMP.: 60°

	A.M.	P.M.
CLEAR	X	X
CLOUDY		
RAIN		
SNOW		



DAILY WORK DESCRIPTION

Time + Material

345 C Cat Excavator w/operator	6 1/2 hrs
Cat Loader w/operator	6 1/2 hrs.
Laborer	6 1/2 hrs.
Foreman	6 1/2 hrs.

32.25' Lts 18" SDR 35 pipe  
 2 Each 18" SDR 35 45° Bends  
 30.19 Tons #304 Big Perm  
 29.92 Tons #8 Stone

Puffy Concrete Sawing: 9:00 a.m. to 10:30 a.m.  
 Core 20" hole in 42" storm pipe for 18" SDR 35 pipe outlet drain for storm M.H. 10-4

Foreman: Jack Moll

Site Visits

EXCESS EXCAVATION TO:

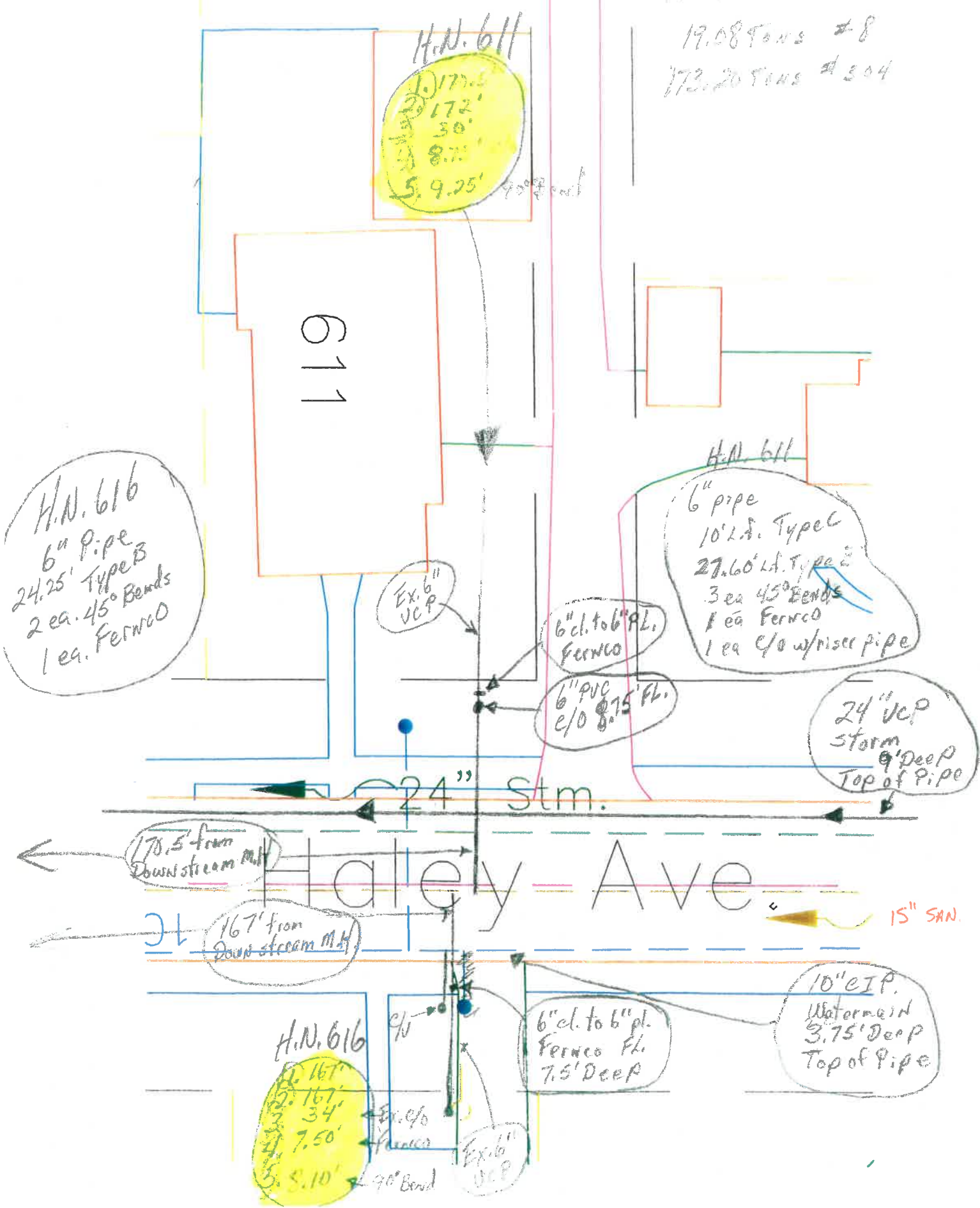
HOURS WORKED BY CONTRACTOR: 7:00 a.m. to 1:30 p.m.





7:30am to 4:30 p.m.  
3-27-15

Total  
3 Trunk = 23' 112  
19.08 TONS #8  
773.20 TONS #304









# Sanitary Service Replacements

3-27-15 H.N. 611 and H.N. 616 Haley ST.  
7:30 a.m. to 4:00 p.m.

320 B Cat Excavator w/operator	8 1/2 hrs.
Loader w/operator	8 1/2 hrs.
Laborer	8 1/2 hrs.
Foreman	8 1/2 hrs.

3 Each Trucks Total hrs. 23 3/4 hrs.

(Materials Used)

19.08 Tons # 8 stone	
173.20 Tons # 304 Big Berm	
37.60' L.F. 6" SDR 35 pipe	7.5' L.F. 15" SDR 35 pipe
3 each 6"-45° Bends	2 each 15" cl. to 15" pl. Fernco
1 each Fernco	2 each 15" x 6" WYE's
1 each 6" c/o w/riser pipe	8.25' L.F.

3-28-15

7:30 a.m. to 12:00 a.m.

320 B Cat Excavator w/operator	4 1/2 hrs.
Loader w/operator	4 1/2 hrs.
Laborer	4 1/2 hrs.
Foreman	4 1/2 hrs.

1 Dump Truck

(Materials Used)

14.34 Tons # 304 Big Berm	
24.25' L.F. 6" SDR 35 pipe	
2 each 6"-45° Bends	
1 each Fernco	





**ENGINEERING DEPARTMENT  
INSPECTION REPORT**

PROJECT: South Side Interceptor I/I Reduction

REPORT NO.: 43

DATE: Wednesday April 1, 2015

CONTRACTOR: Vernon Nagel, Inc.

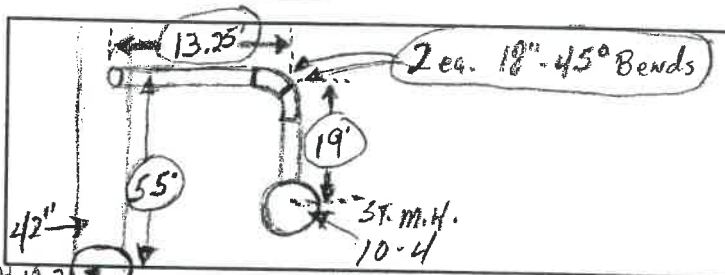
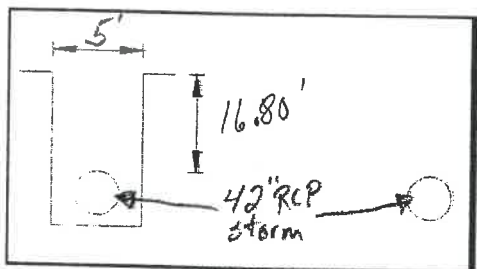
L.T.C.P. PROJ. NO. \_\_\_\_\_

INSPECTOR: Rex Moll

LABORERS	1	PAVER		SUB. CONT. FOREMAN	
BACKHOE		GRADER		SUB. CONT. LABORERS	
LOADER	1	CRANE		NUCLEAR DEN. TESTING	
DOZER		PUMP		CONCRETE TESTING	
TRUCKS		SCRAPER			
ROLLER		PVMT. SAW			
FOREMAN	1	FOREMAN			
EXCAVATOR	1				

WEATHER  
AVG. TEMP.: 60°

	A.M.	P.M.
CLEAR	X	X
CLOUDY		
RAIN		
SNOW		



**DAILY WORK DESCRIPTION**

Time + Material

345 C Cat Excavator w/operator	6 1/2 hrs
Cat Loader w/operator	6 1/2 hrs.
Labarer	6 1/2 hrs.
Foreman	6 1/2 hrs.

32.25' Lft. 18" SDR 35 pipe  
 2 Each 18" SDR 35 45° Bends  
 36.19 Tons #304 Big Berm  
 29.92 Tons #8 Stone

Puffy Concrete Sawing: 9:00 a.m. to 10:30 a.m.  
 Core 20" hole in 42" storm pipe for 18" SDR 35 pipe outlet drain  
 for storm M.H. 10-4

Foreman: Jack Moll

Site Visits

EXCESS EXCAVATION TO:

HOURS WORKED BY CONTRACTOR: 7:00 a.m. to 1:30 p.m.

